



San Diego CCTV Pros

A step by step Remote access guide to your:



System

Welcom to San Diego CCTV Pros!

Here is a step by step guide on how to access your MAGIC Series DVR System for the very first time remotely from a computer and mobile Device

NOTE: you will only have to do this the very first time you install it on a computer. From there after, all you have to do is open the application and choose your DVR

Lets Get started!

Here is a list of information that you will need:

Sub Domain / DVR adress:

PORT (S):

Username:

Password:

First off, on your computer go to internet explorer or SAFARI for MAC computer



for windows

or



for MAC Computer

once opened, type in the following address:

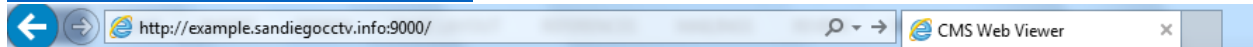
Quick note: (subdomain) = should be given by tech to customer. You can always get this information by calling San Diego CCTV Pros @ (858) 222 7547. Do not panic. We are here for you.

your address should be:

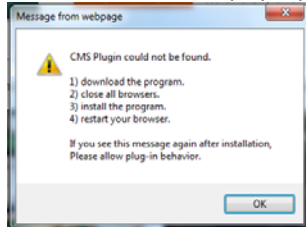
[http://\(subdomain.sandiegocctv.info\):9000](http://(subdomain.sandiegocctv.info):9000)

for example:

<http://example.sandiegocctv.info:9000>



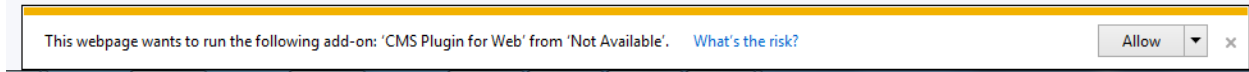
this screen should pop up



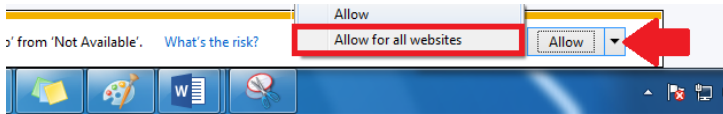
click "ok"

Office Phone: (858)222-7547 | www.SanDiegoCCTVPros.com | contact@SanDiegoCCTVPros.com

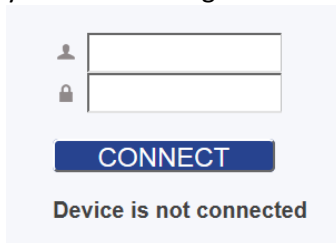
then this screen.



now click on the little back upsidedown triangle next to the “allow” this should bring up a 2 option menu – select “allow for all websites”



you should now get this window



your username:_____ and your password:_____

congratulations!. You should now see your security system.
For any further assistanse please do not hesitate to call us.

For Smart device access.Please follow these instructions

First off, on your mobile device, open up the Play Store or App Store on iphones and download

Mr. Patrol



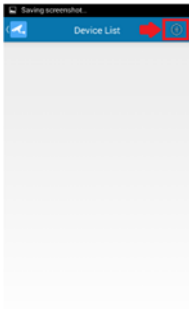
Once downloaded open it up

Office Phone: (858)222-7547 | www.SanDiegoCCTVPros.com | contact@SanDiegoCCTVPros.com

Once opened, click on “live monitoring”



Now click on the icon on the right hand corner



Now input the following information

name: cameras

address:

Port:

Only event record data playback-off

search spee improvement – on

1-division high quality – on

Auto login – on

User: admin

Password:

Then click the floppy disk icon on upper right corner to save

when done inputting all the information tap this icon

Name:
address:
port:

user:
password:

Your DVR should appear here, tap to view cameras.

